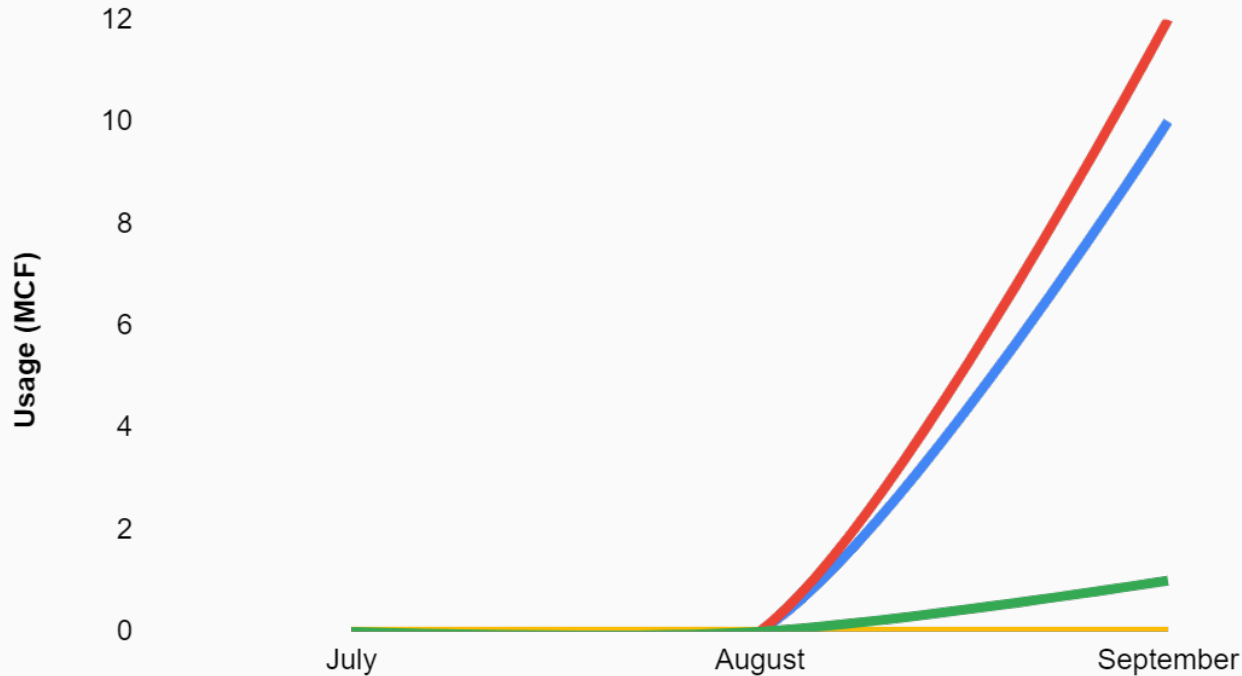


# Natural Gas

## Q3 Usage

— 2019 — 2020 — 2021 — 2022

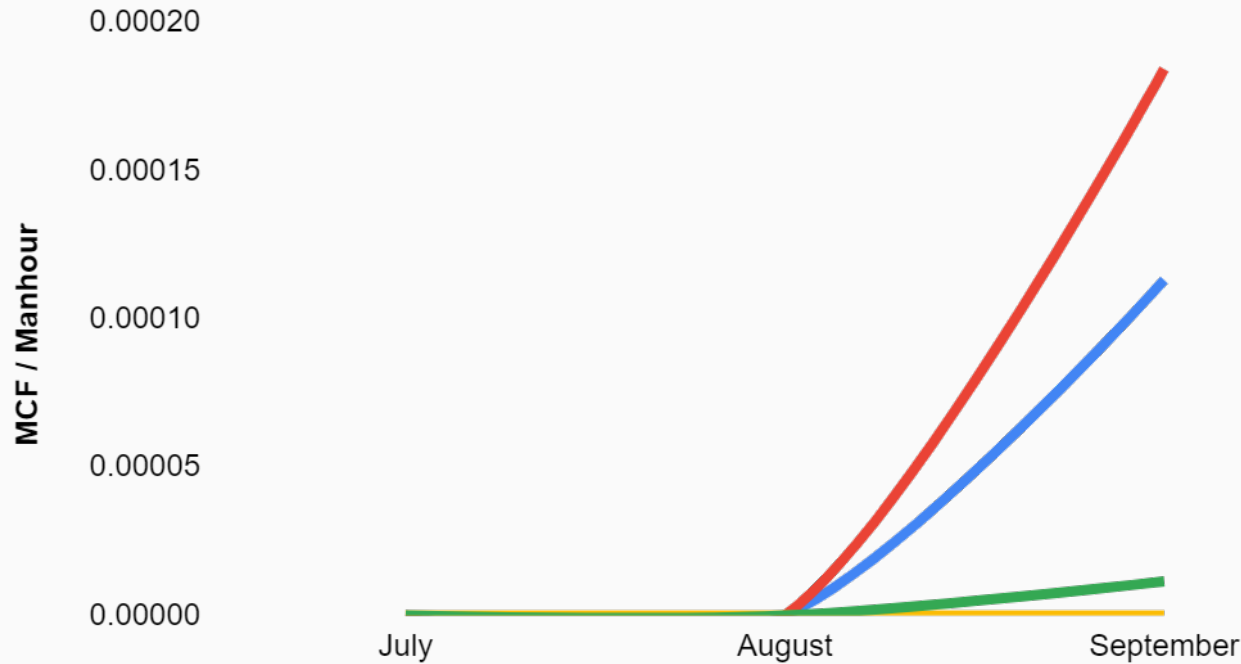


Q3	Usage (MCF)	Intensity (MCF / manhour)
2019	10	0.0000367
2020	12	0.0000624
2021	0	0
2022	1	0.0000038

# Natural Gas

## Quarterly Intensity Comparison

— 2019 — 2020 — 2021 — 2022

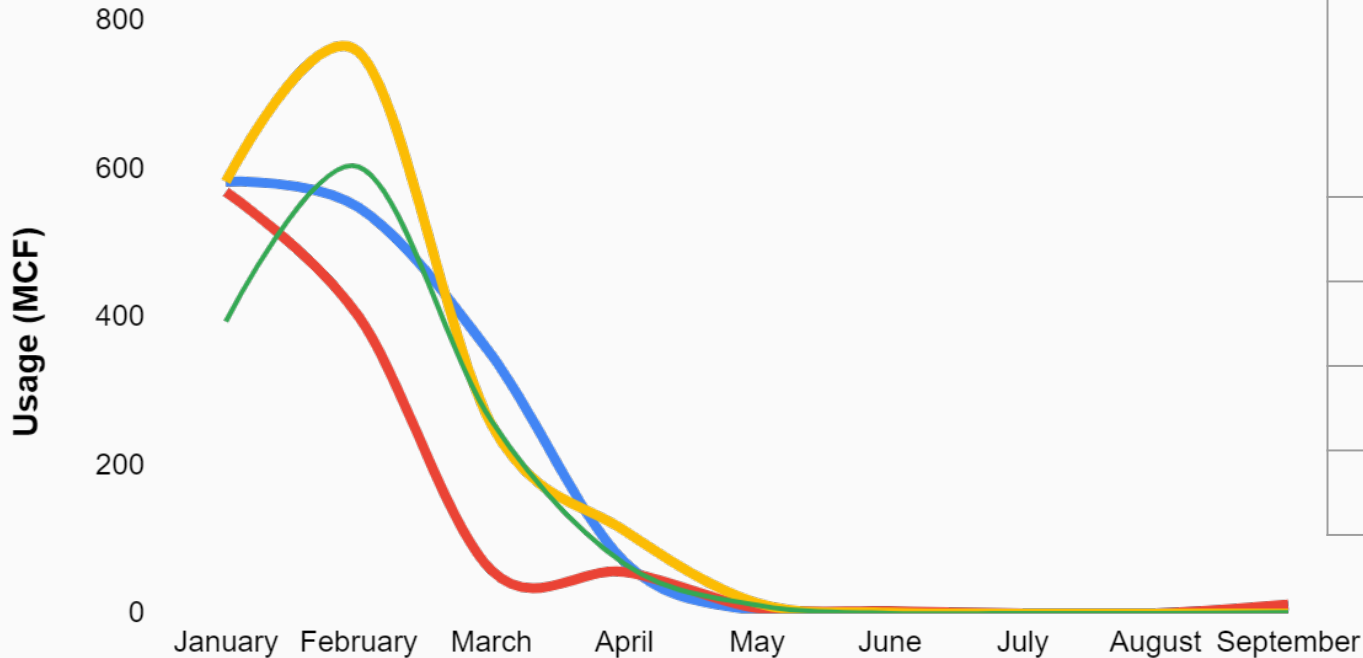


Q3	Usage (MCF)	Intensity (MCF / manhour)
2019	10	0.0000367
2020	12	0.0000624
2021	0	0
2022	1	0.0000038

# Natural Gas

## Jan - Sept. Usage

2019 2020 2021 2022



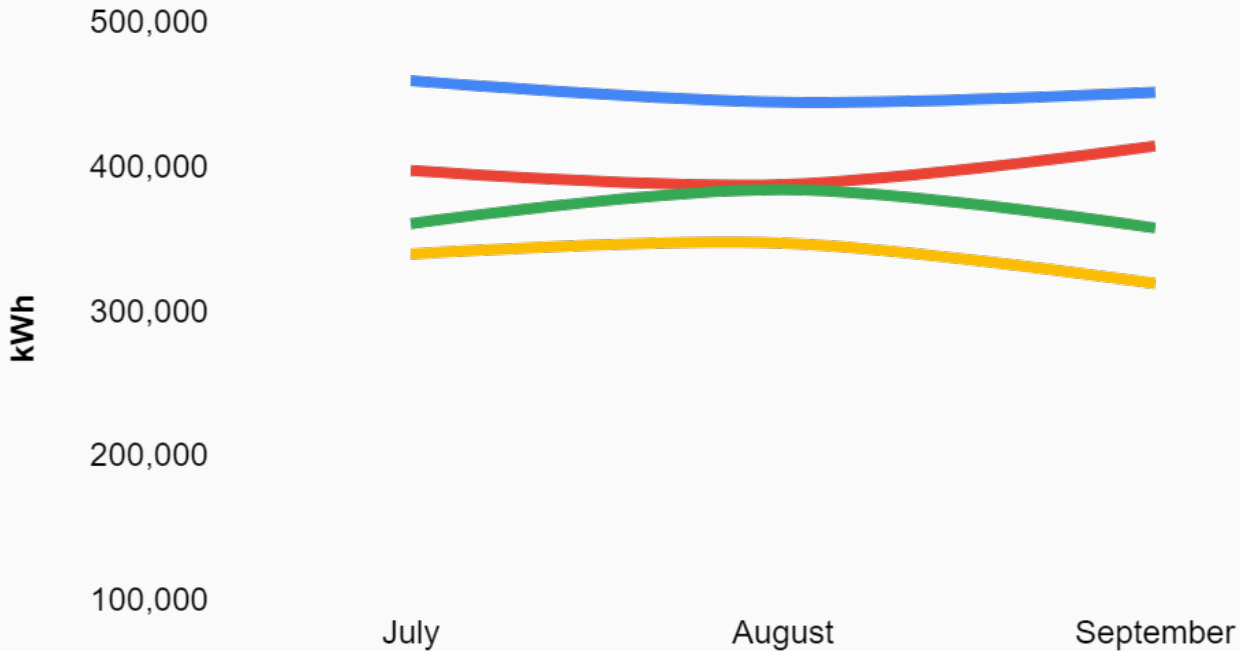
\*Established high February 2021 value due to power crisis\*

YTD	Usage (MCF)	Intensity (MCF / manhour)
2019	1,564	0.0022118
2020	1,106	0.0019654
2021	1,723	0.0025742
2022	1,336	0.0019195

# Electricity

## Q3 Usage

2019 2020 2021 2022

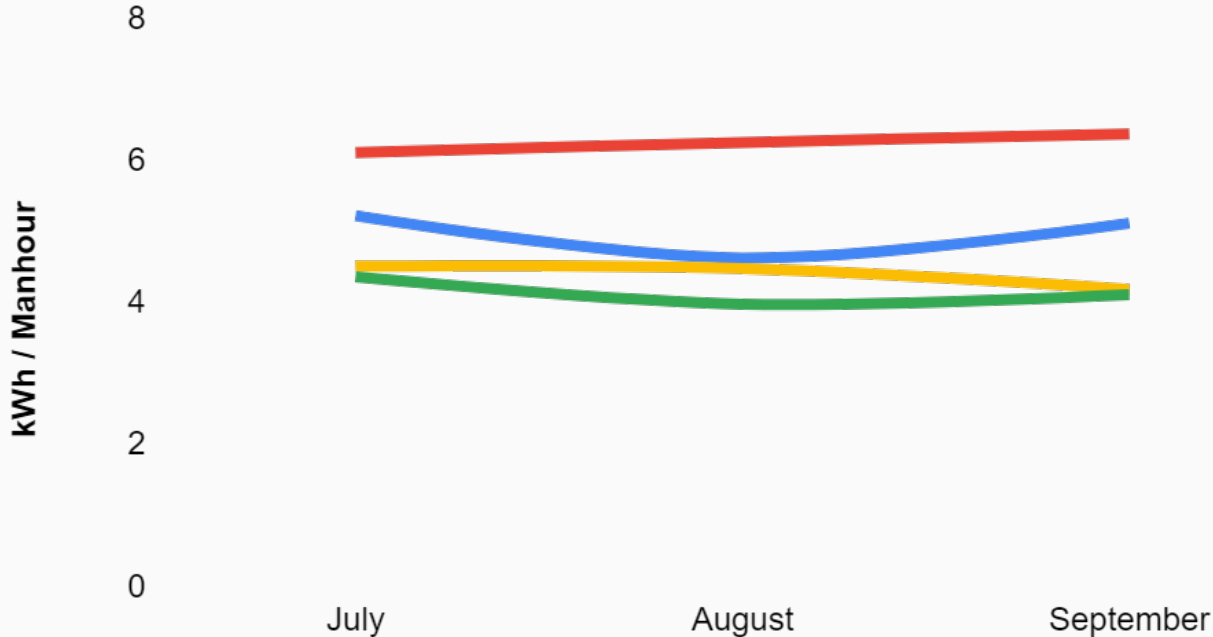


Q3	Usage (kWh)	Intensity (kWh / manhour)
2019	1,357,557	4.98
2020	1,201,283	6.25
2021	1,007,507	4.39
2022	1,104,080	4.14

# Electricity

## Quarterly Intensity Comparison

— 2019 — 2020 — 2021 — 2022

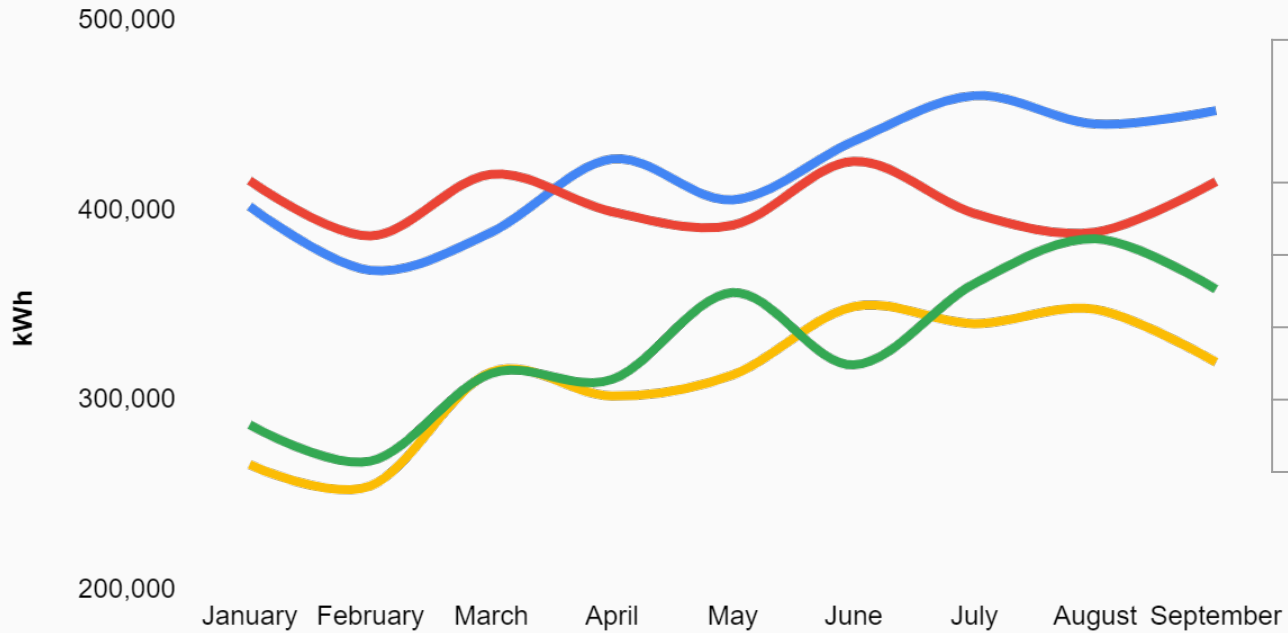


Q3	Usage (kWh)	Intensity (kWh / manhour)
2019	1,357,557	4.98
2020	1,201,283	6.25
2021	1,007,507	4.39
2022	1,104,080	4.14

# Electricity

## Jan - September Usage

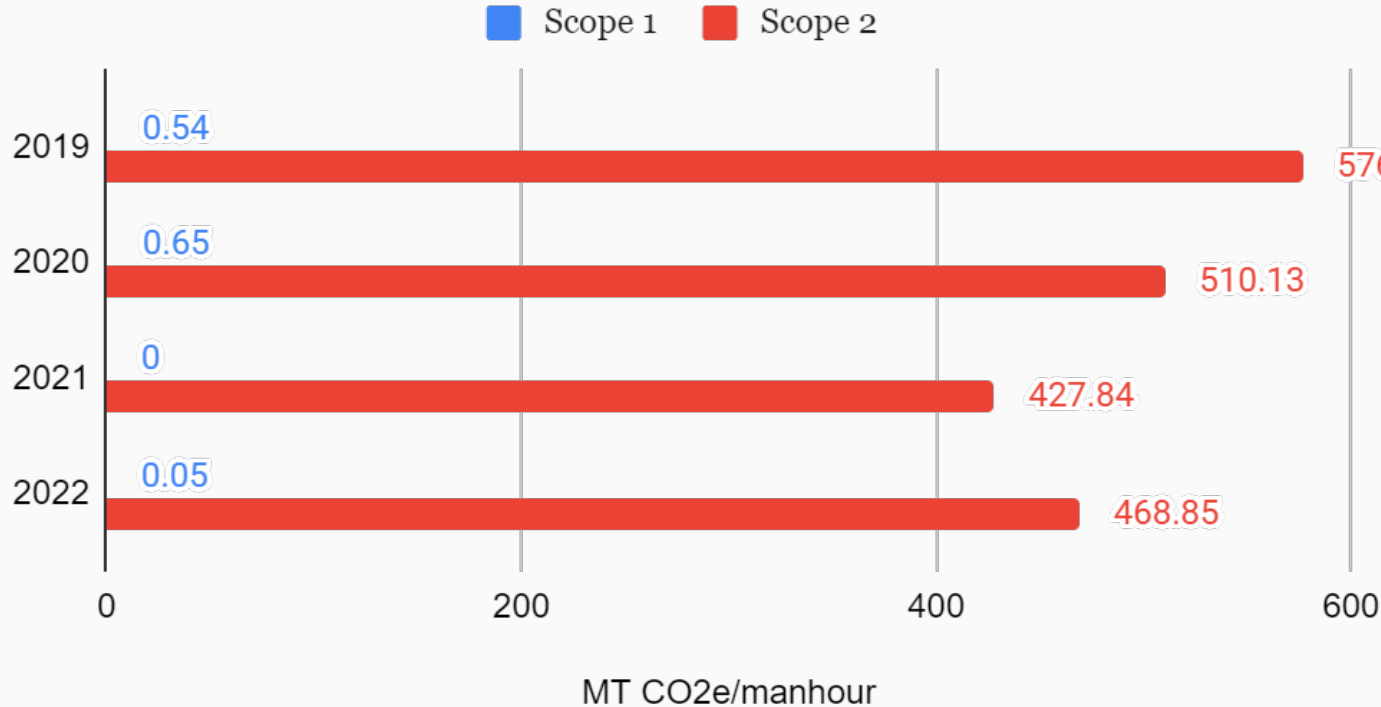
— 2019 — 2020 — 2021 — 2022



	Usage (kWh)	Intensity (kWh / manhour)
<b>2019</b>	<b>3,783,827</b>	<b>4.77</b>
<b>2020</b>	<b>3,638,214</b>	<b>5.61</b>
<b>2021</b>	<b>2,731,983</b>	<b>3.91</b>
<b>2022</b>	<b>2,904,705</b>	<b>3.75</b>

# GHG Emissions - Scopes 1 & 2 - Q3 2022

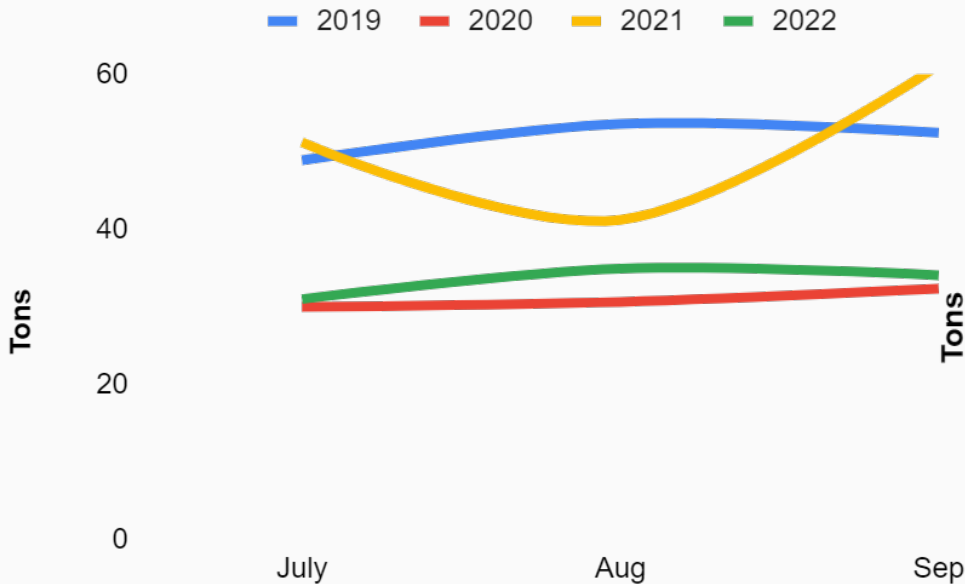
## GHG Emissions



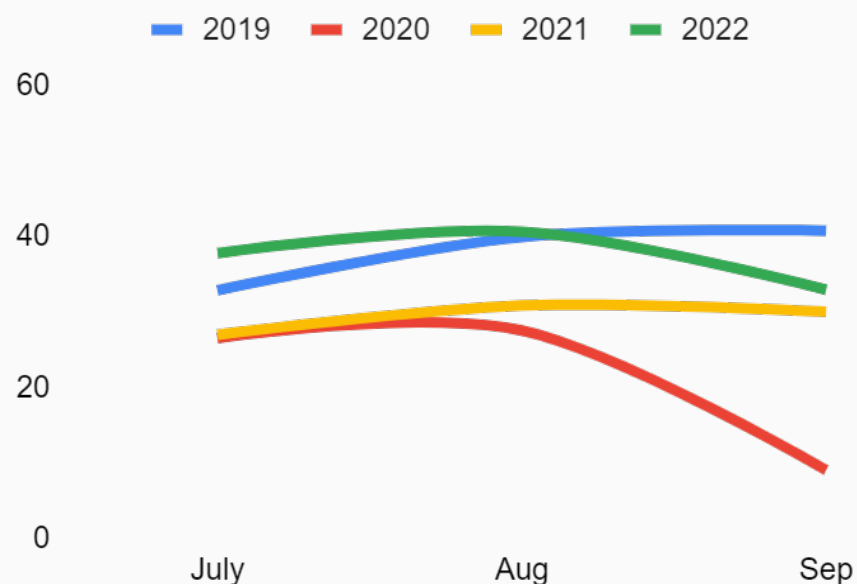
- Lighting retrofit will bring down Scope 2 (energy efficiency)
- Warmer weather will decrease Scope 1

# Q3 Waste

## Recycled Waste



## Landfilled Waste



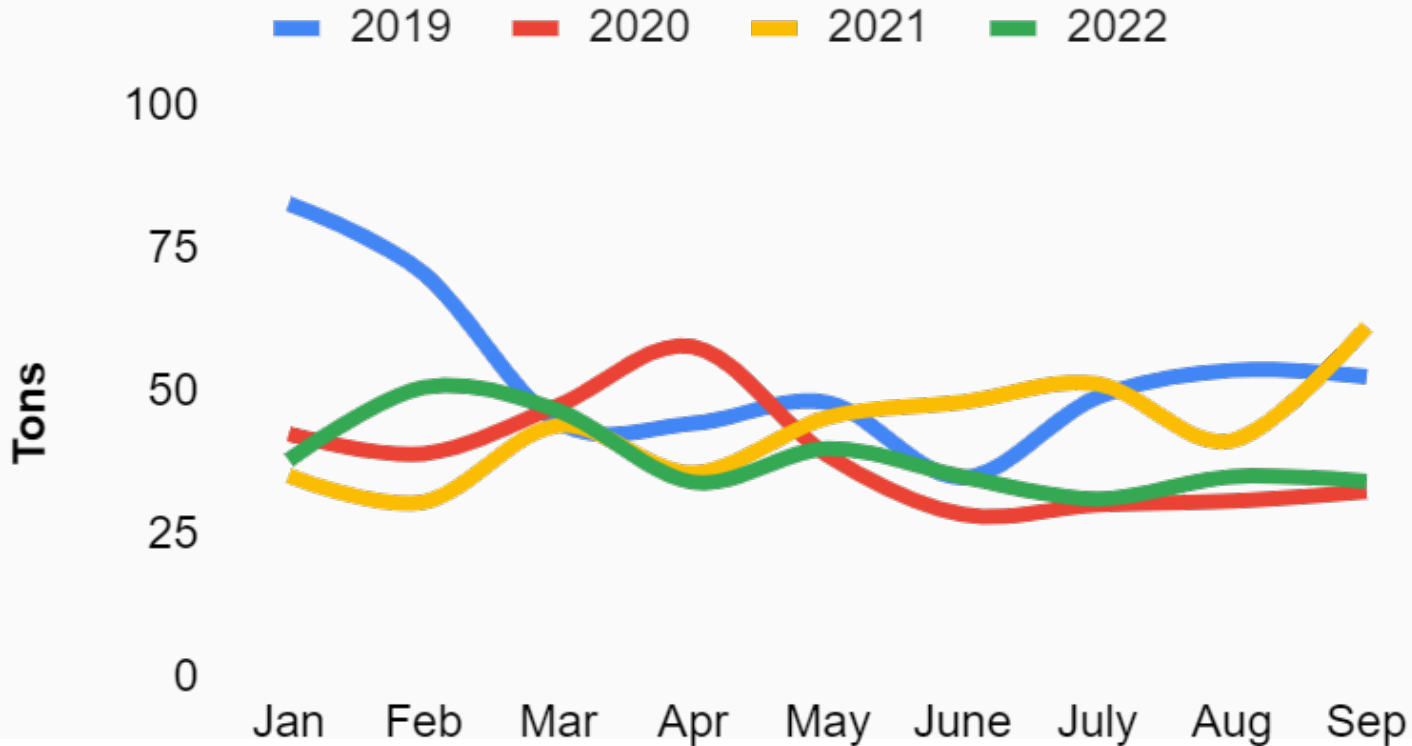
- Third party review to identify more recyclables
- Procedures and work instructions for waste segregation

Q3	2019	2020	2021	2022
<b>Diversion Rate</b>	<b>57.72%</b>	<b>59.61%</b>	<b>63.63%</b>	<b>47.35%</b>



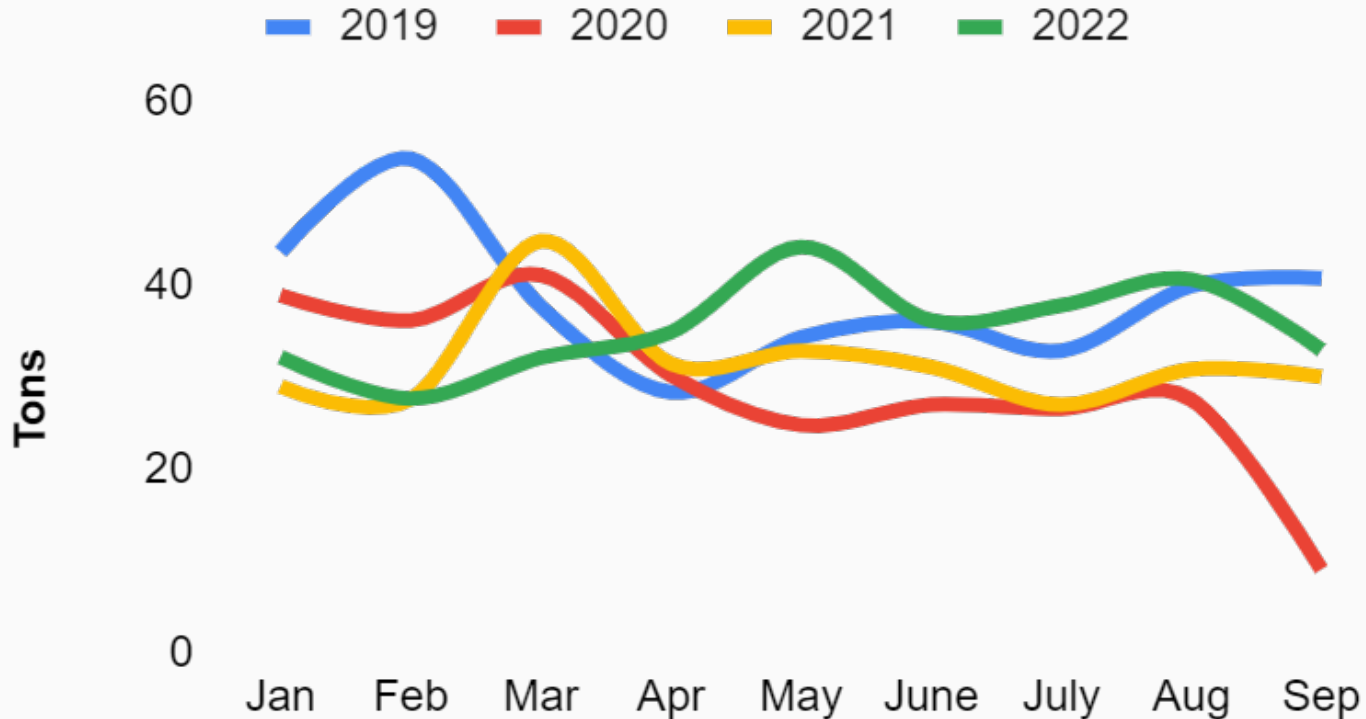
# January - September

## Recycled Waste



# January - September

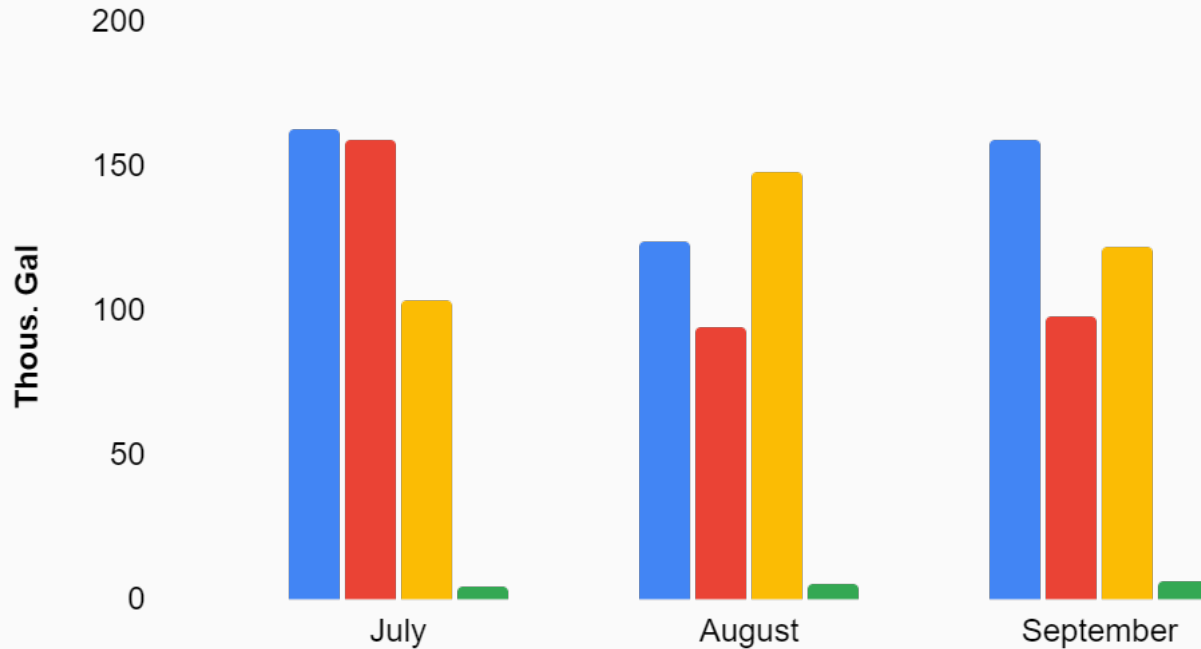
## Landfilled Waste



# Water

## Q3 Usage

2019 2020 2021 2022

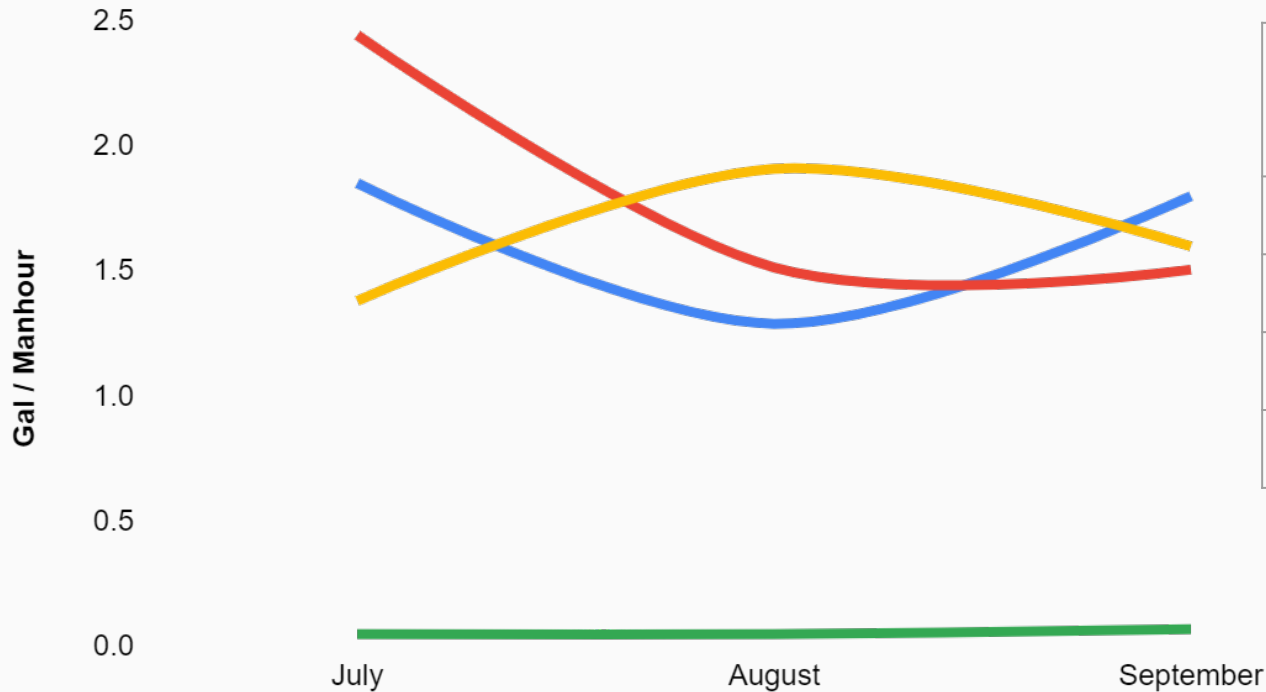


Q3	Usage (Thous. gal)	Intensity (gal /manhour)
2019	446	1.65
2020	351	1.82
2021	366	1.60
2022	15	0.06

# Water

## Quarterly Intensity Comparison

— 2019 — 2020 — 2021 — 2022

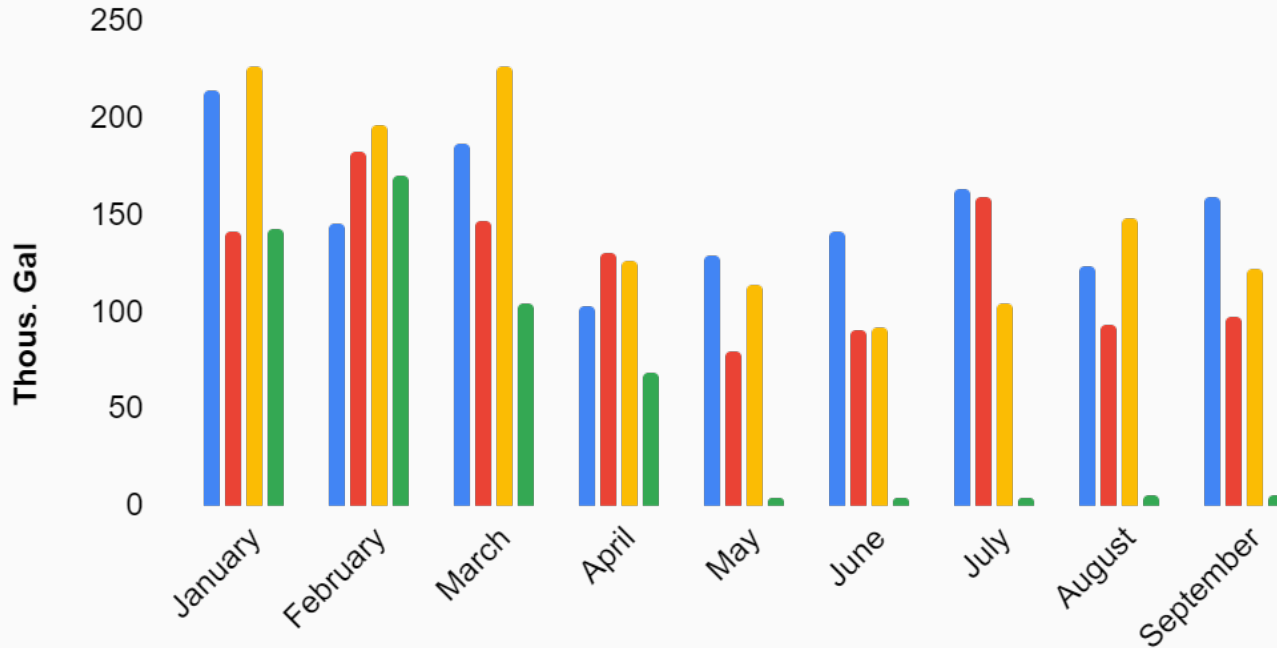


Q3	Usage (Thous. gal)	Intensity (gal /manhour)
2019	446	1.65
2020	351	1.82
2021	366	1.60
2022	15	0.06

# Water

## Jan-September Usage

■ 2019 ■ 2020 ■ 2021 ■ 2022



	Usage (Thous. gal)	Intensity (gal /manhour)
<b>2019</b>	<b>1365</b>	<b>1.719</b>
<b>2020</b>	<b>1123</b>	<b>1.731</b>
<b>2021</b>	<b>1226</b>	<b>1.754</b>
<b>2022</b>	<b>510</b>	<b>0.658</b>